

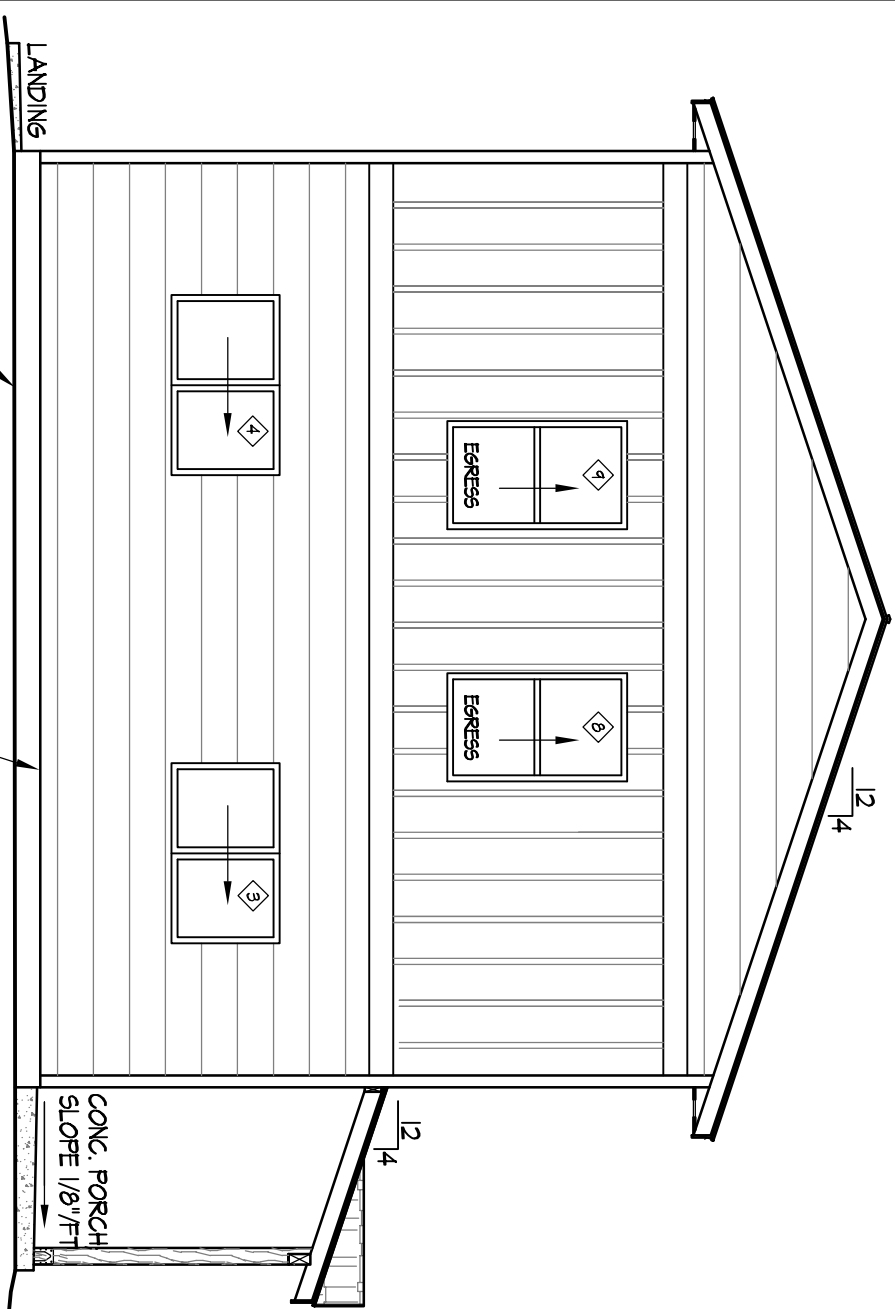
TYP. EXTERIOR WALL SYSTEM:

HARD-PLANK SIDING OVER
 30# HOUSE WRAP VAPOR BARRIER OVER
 1/8" EXT. SHEATHING OVER
 2x6 WOOD STUDS @ 24" O.C. W/
 R-21 INSULATION MINIMUM

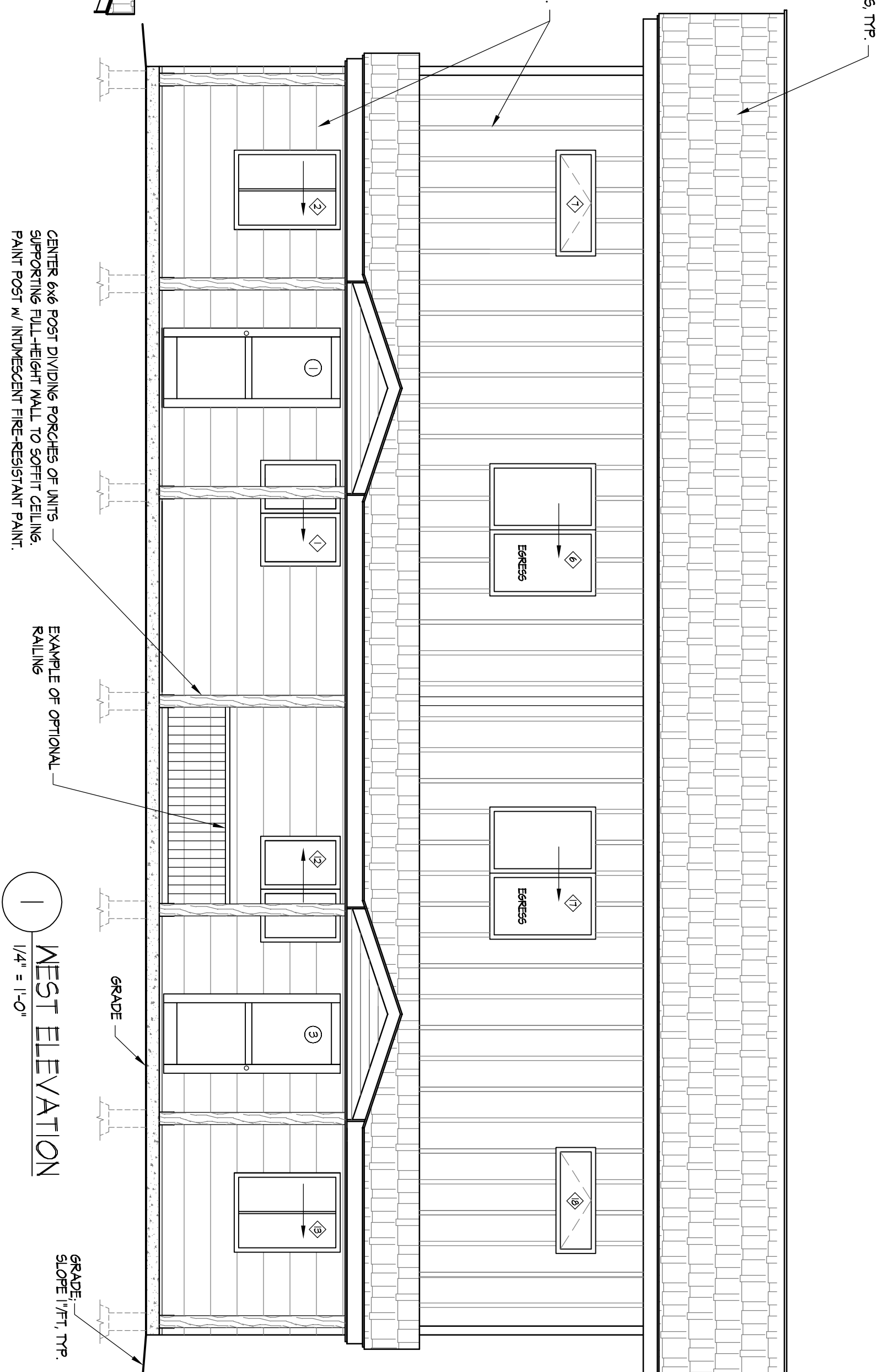
HEATING SYSTEM:
 NATURAL GAS FIREPLACE.
 DUCTING TO BE DETERMINED BY
 MECHANICAL CONTRACTOR

ASPHALT SHINGLES, TYP.

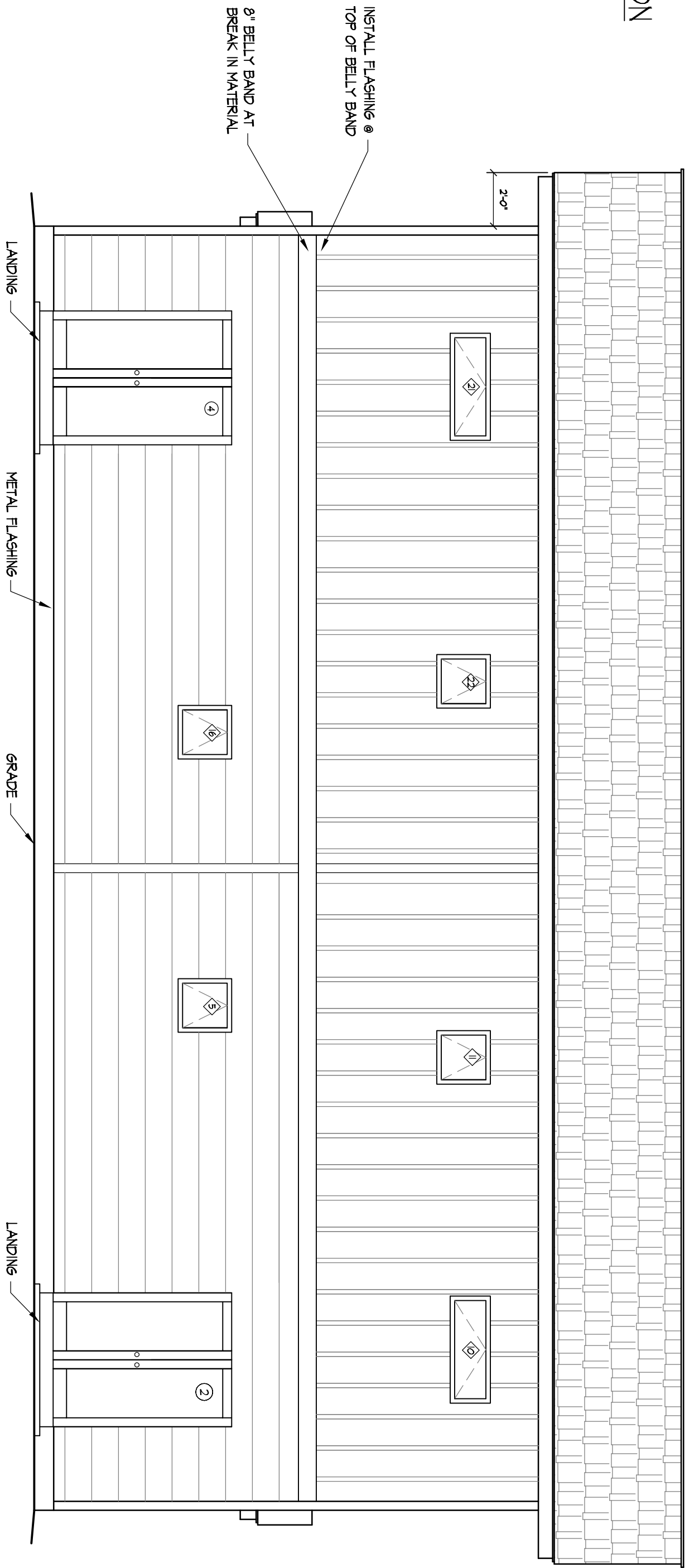
HARD-PLANK SIDING, TYP.



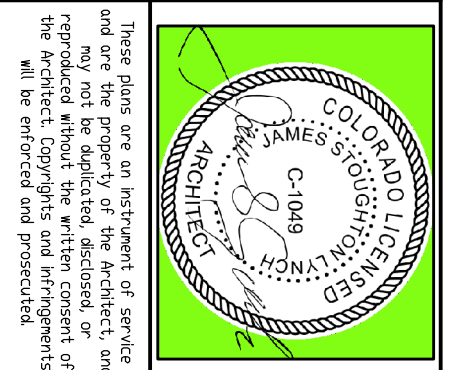
3
 NORTH ELEVATION
 3/16" = 1'-0"



1
 WEST ELEVATION
 1/4" = 1'-0"



2
 EAST ELEVATION
 1/4" = 1'-0"



Jay Lynch Architects, LLC
 104 E. Mill St. (P.O. Box 409)
 Bayfield, CO 81122
 970-884-0625, Fax 884-7390

HABITAT FOR HUMANITY
 823 & 825 BURNHAM LANE
 BAYFIELD, COLORADO

EXTERIOR ELEVATIONS

DATE ISSUED:	2/12/21
DRAWN BY:	DE
CHECKED BY:	JBL
REVISIONS:	
	3-17-21
	3-23-21

A5